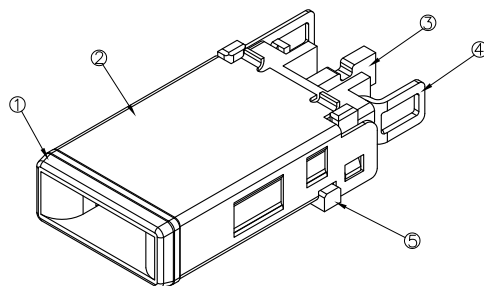
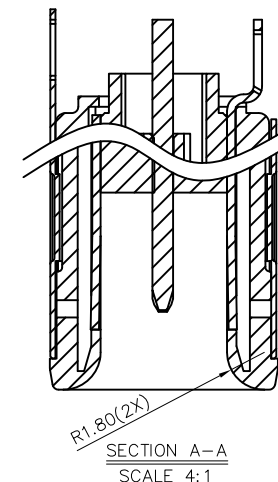
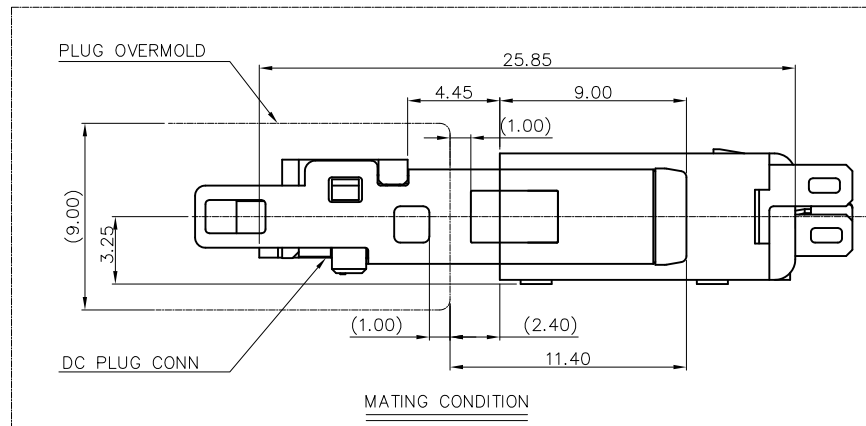
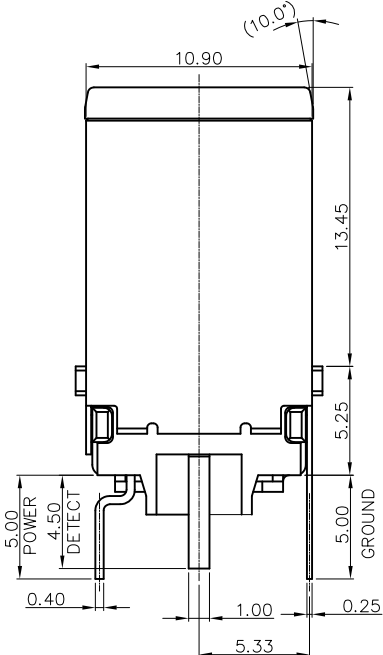
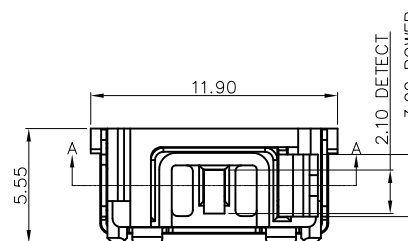
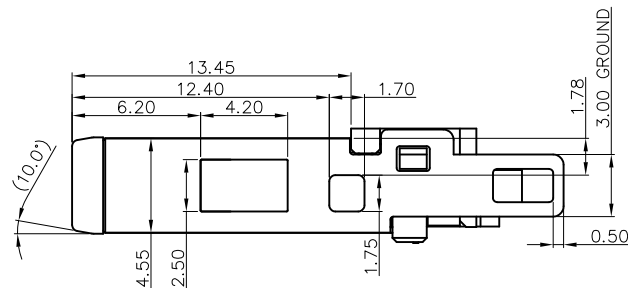
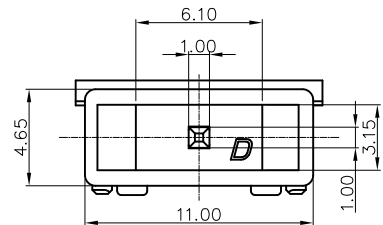




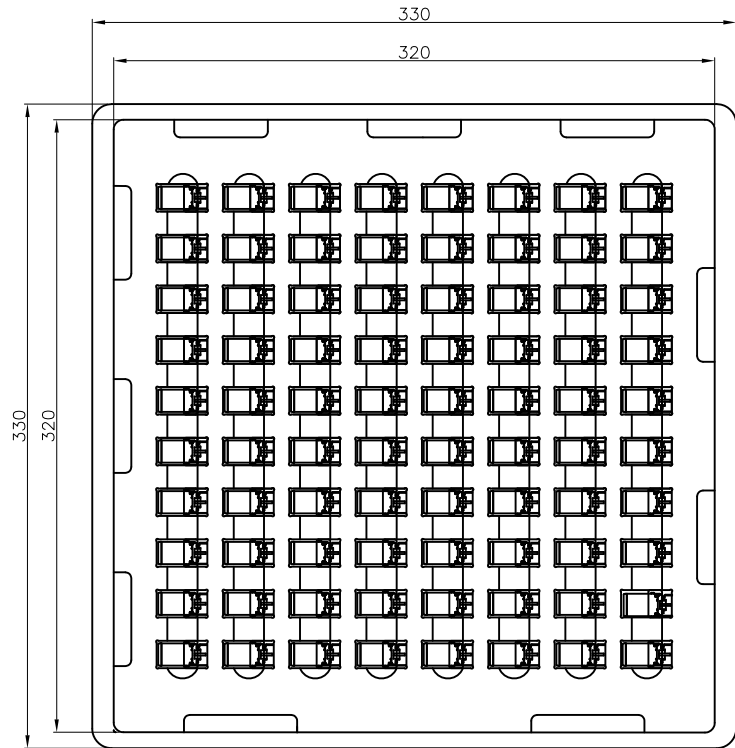
REV.	ECN NO.	APPD.
C	ECN130219007	Tommy Zhang
D	ECN151009002	Fan Fang
E	ECN161208029	Fan Fang
F	ECN180808005	Darren Lei



Q'TY	NAME	MATERAIL	FINISH	ITEM
1	COVER	THERMO-PLASTIC	UL94V-0,NATURAL	⑤
1	POWER CONTACT	COPPER ALLOY	80u" MIN. NICKEL UNDER PLATING; 8u" MIN. GOLD PLATING ON CONTACT AREA;	④
1	DETECT CONTACT	COPPER ALLOY	80u" MIN. NICKEL UNDER PLATING; 8u" MIN. GOLD PLATING ON CONTACT AREA;	③
1	GROUNDCONTACT (SHELL)	COPPER ALLOY	80u" MIN. MATTE TIN PLATING ON SOLDER AREA.	②
1	HOUSING	HIGHTEMP-PLASTIC	UL94V-0	①

UNITS: mm	GENERAL TOLERANCE	APPROVE: Darren Lei	PART NO.:
DATE: 08/08'18	X. ±0.50 .X. ±0.30 .XX ±0.20 .XXX ±0.15	CHECKED: Wes.Wu	TITLE: CUSTOMER DRAWING FOR DC IN PLUG
SHEET: 1/2	MATERIAL: N/A	DRAWING: Fei Liu	DRAWING NO.:
REV. F	FINISH: N/A		820-0000-008





NOTES:

- 1.MATERIAL: SEE TABLE.
- 2.ELECTRICAL PERFORMANCES:
  - 2-1.VOLTAGE RATINGS: 25V DC MAX.
  - 2-2.CURRENT RATINGS:
    - 7A MAX PER POWER CONTACT AND GROUND CONTACT WHILE INTERWORKING WITH 7A DC JACK
    - 10.7A MAX PER POWER CONTACT AND GROUND CONTACT WHILE INTERWORKING WITH 10.7A DC JACK
  - 1A MAX PER DETECT CONTACT
  - 2-3.LOW LEVEL CONTACT RESISTANCE:
    - (1). GROUND CONTACT 7 mΩ MAX. INITIAL, 10mΩ MAX, FINAL.
    - (2). DETECT CONTACT 10 mΩ MAX. INITIAL, ΔR=10mΩ MAX, FINAL.
    - (3). POWER CONTACT 7 mΩ MAX. INITIAL, ΔR=10mΩ MAX, FINAL.
  - 2-4.INSULATION RESISTANCE: 500 MΩ MIN.
  - 2-5.DIELECTRIC WITHSTANDING VOLTAGE:
    - SUBJECT A VOLTAGE OF 150V rms FOR 1 MINUTE BETWEEN ADJACENT CONTACTS
- 3.MECHANICAL PERFORMANCES:
  - 3-1.MATING FORCE: 3.0Kgf MAX.
  - 3-2.UNMATING FORCE: 0.7Kgf MIN.
  - 3-3.DURABILITY: 5000 CYCLES.
- 4.HARMFUL MATERIAL SHOULD MEET THE REQUIREMENTS OF DRAPHO STANDARD DOCUMENT "DSQC0042"

PART NO.

PJ C P 005 6 - 1 \* 0 \* H - C

- C: CABLE TYPE
- P: PLUG
- CONTACT PLATING:
- 6: GOLD 8u"MIN
- HALOGEN FREE
- PACKAGE CODE:
  - 2: TRAY
  - A: TRAY(ANTISTATIC)
- COLOR: 0= YELLOW
- B=BLACK
- G=GREEN

P/N	PCS/TRAY	TRAY/BOX	PCS/BOX
PJCP0056-1002H-C	80	30	2400
PJCP0056-1B02H-C	80	30	2400
PJCP0056-1G02H-C	80	30	2400
PJCP0056-100AH-C	80	30	2400

mm	GENERAL TOLERANCE		APPROVED: Darren Lei	PART NO.: PJCP0056-1*0*H-C
DATE: 08/08'18	X. ±1.00	X.* ±2*	CHECKED: Wes.Wu	TITLE: CUSTOMER DRAWING FOR DC IN PLUG
SCALE: N/A	.X ±0.50	.X*	DRAWING: Fei Liu	DRAWING NO.: 820-0000-008
SHEET: 2/2	MATERIAL: N/A	Q'TY N/A	 <b>Highstar</b> Drapho ELECTRONICS TECHNOLOGY CO., LTD	
REV. F	FINISH: N/A			