

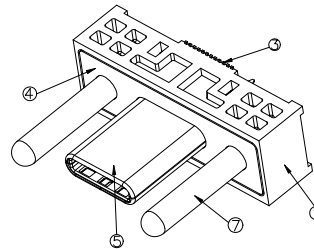
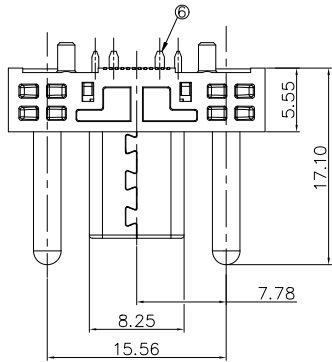
RoHS HF

REV.	ECN. NO.	APPD.
A	ECN200604012	River Yao
B	ECN200916016	Mike Wu
C	ECN210118005	Mike Wu

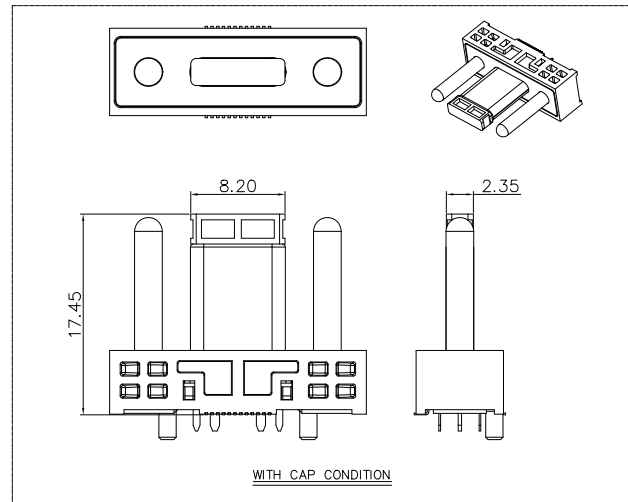
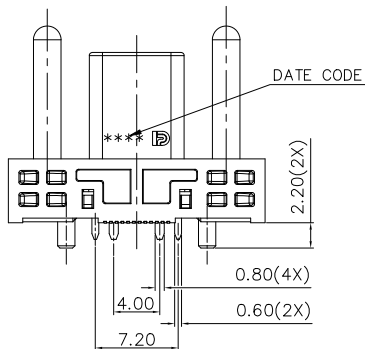
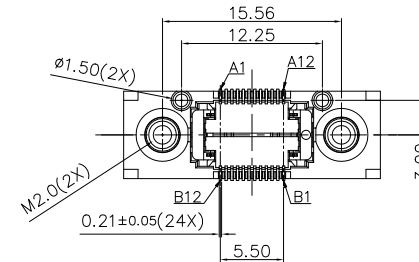
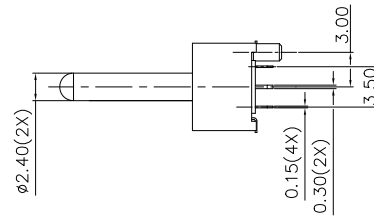
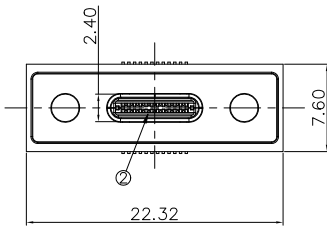
- NOTES:
- DIMENSIONS SHALL BE INTERPRETED PER ASME Y14.5M-1994.
 - MATERIAL: SEE TABLE.
 - ELECTRICAL PERFORMANCES:
 - VOLTAGE RATING: 25V DC MAX.
 - CURRENT RATING:
 - 0.5A MAX. PER SIGNAL,
 - 1.25A MAX. PER VBUS AND GND PIN.
 - LOW LEVEL CONTACT RESISTANCE:
 - 40mΩ MAX. FOR VBUS, GND AND OTHER CONTACTS,
 - 50mΩ MAX. FINAL AFTER TEST.
 - INSULATION RESISTANCE: 500 MΩ MIN.
 - DIELECTRIC WITHSTANDING VOLTAGE:
 - SUBJECT A VOLTAGE OF 100V AC FOR 1 MINUTE BETWEEN ADJACENT CONTACTS;
 - MECHANICAL PERFORMANCES:
 - MATING AND UNMATING FORCE IS 0.5~4.0Kgf.
 - DURABILITY: 10000 CYCLES.
 - HARMFUL MATERIAL MEET THE REQUIRMENTS OF DRAPHO'S STANDARD DOCUMENT "DQSP2014".
 - PLEASE CONTACT DRAPHO SALES REPRESENTATIVE TO VERIFY PRODUCT DETAILS & AVAILABILITY.

△ D/C: LASER MARKING X X X X

YEAR MONTH LINE DATE



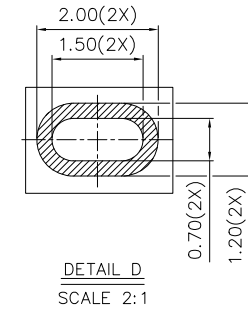
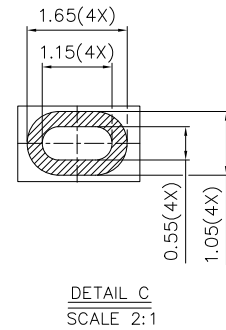
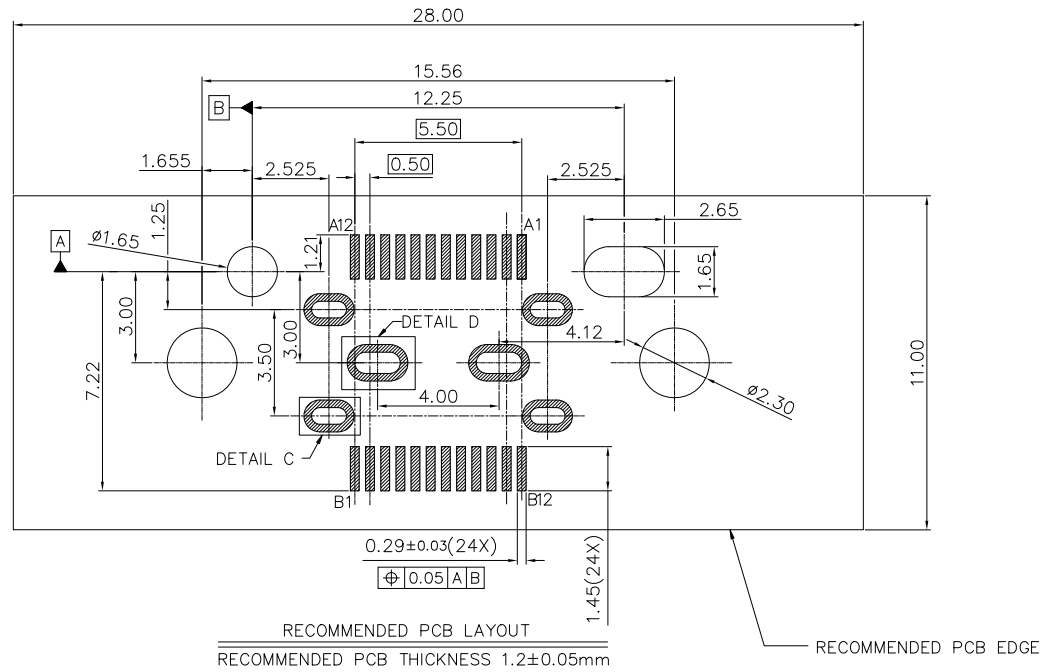
3D VIEW



⑦	GUIDE PIN	SUS303CU	N/A
⑥	LATCH	SUS301 3/4H	50u" MIN. SOLDERABLE NICKEL PLATING OVER ALL
⑤	SHELL	SUS304-1/2H	N/A
④	PLATE	SUS304-1/2H	N/A
③	SIGNAL CONTACT	C7035 TM06	50u" MIN. NICKEL UNDER PLATING OVER ALL, 40u" MIN. MATTE TIN PLATING ON SOLDER AREA 12u" MIN. GOLD PLATING ON CONTACT AREA
②	INSERT MOLDING	LCP E6808UHF	UL94V-0 COLOR: BLACK
①	HOUSING	LCP E471i	

UNITS: mm	GENERAL TOLERANCE	APPROVED: Mike Wu	PART NO.: DK00127-D2E05-1H
DATE: 01/19'21	X. ±0.50 X.* ±3"	CHECKED: Wes Wu	TITLE: CUSTOMER DRAWING FOR 0.5P 24PIN DOCKING PLUG
SCALE: 1:1	.X ±0.30 .X.* ±2"	DRAWING NO.: Zhao Xia	DRAWING NO.: 820-0000-0848
SHEET: 1/3	MATERIAL: N/A	Q'TY: N/A	 Highstar Drapho ELECTRONICS TECHNOLOGY CO., LTD
REV. C	FINISH: N/A		

RoHS HF



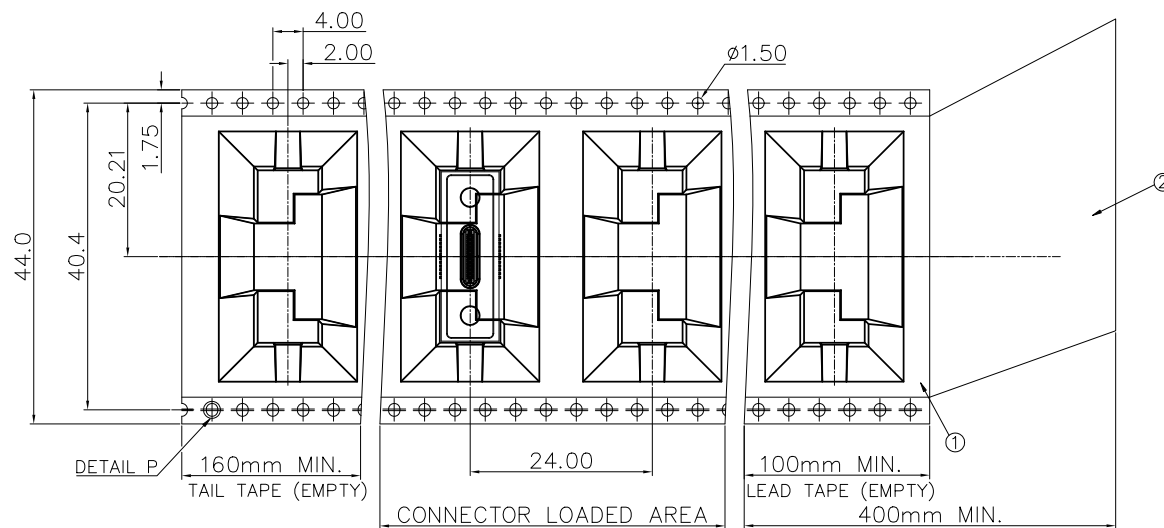
DK 0 0 12 7 - D 2 E 0 5 - 1 H

- 0: VERTICAL TYPE
- 0: PLUG CONNECTOR
- 12: 12POS./ROW
- 7: 12u" Au PLATING
- D: 0.5mm PITCH
- H: HALOGEN FREE & LEAD FREE
- PACKAGE CODE
- 1: CARRY TAPE
- 5: GUIDE TYPE
- 0: SMT TYPE
- BODY HEIGHT
- E: 14.70mm
- 2: 2ROWS

PIN	SIGNAL	DESCRIPTION	MATING SEQUENCE	DESCRIPTION	SIGNAL	PIN
A1	GND (20V 5A)	GROUND RETURN	FIRST	GROUND RETURN	POWER GND (5A)	B12
A2	SSTXP1	POSITIVE HALF OF FIRST SUPERSPEED TX DIFFERENTIAL PAIR	SECOND	POSITIVE HALF OF FIRST SUPERSPEED RX DIFFERENTIAL PAIR	SSRXP1	B11
A3	SSTXN1	NEGATIVE HALF OF FIRST SUPERSPEED TX DIFFERENTIAL PAIR	SECOND	NEGATIVE HALF OF FIRST SUPERSPEED RX DIFFERENTIAL PAIR	SSRXN1	B10
A4	VBUS	BUS POWER	FIRST	BUS POWER	VBUS	B9
A5	CC1	CONFIGURATION CHANNEL	SECOND	SIDEBAND USE(SUB)	SBU2	B8
A6	DP1	POSITIVE HALF OF THE USB2.0 DIFFERENTIAL PAIR-POSITION 1	SECOND	NEGATIVE HALF OF THE USB2.0 DIFFERENTIAL PAIR-POSITION 2	DN2	B7
A7	DN1	NEGATIVE HALF OF THE USB2.0 DIFFERENTIAL PAIR-POSITION 1	SECOND	POSITIVE HALF OF THE USB2.0 DIFFERENTIAL PAIR-POSITION 2	DP2	B6
A8	SBU1	SIDEBAND USE(SUB)	SECOND	CONFIGURATION CHANNEL	CC2	B5
A9	VBUS	BUS POWER	FIRST	BUS POWER	VBUS	B4
A10	SSRXN2	NEGATIVE HALF OF SECOND SUPERSPEED RX DIFFERENTIAL PAIR	SECOND	NEGATIVE HALF OF SECOND SUPERSPEED TX DIFFERENTIAL PAIR	SSTXN2	B3
A11	SSRXP2	POSITIVE HALF OF SECOND SUPERSPEED RX DIFFERENTIAL PAIR	SECOND	POSITIVE HALF OF SECOND SUPERSPEED TX DIFFERENTIAL PAIR	SSTXP2	B2
A12	GND	GROUND RETURN	FIRST	GROUND RETURN	GND	B1

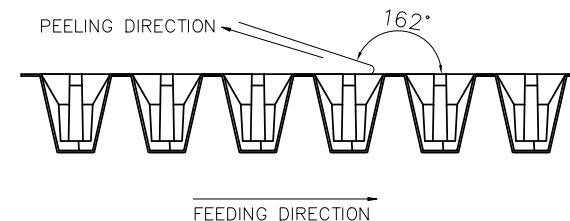
UNITS: mm	GENERAL TOLERANCE	APPROVED: Mike Wu	PART NO.: DK00127-D2E05-1H
DATE: 01/19'21	X. ±0.20 .X ±0.10 .XX ±0.075	CHECKED: Wes Wu	TITLE: CUSTOMER DRAWING FOR 0.5P 24PIN DOCKING PLUG
SHEET: 2/3	MATERIAL: N/A	DRAWING: Zhao Xia	DRAWING NO.: 820-0000-0848
REV. C	FINISH: N/A	Q'TY N/A	Highstar Drapho ELECTRONICS TECHNOLOGY CO., LTD

RoHS HF



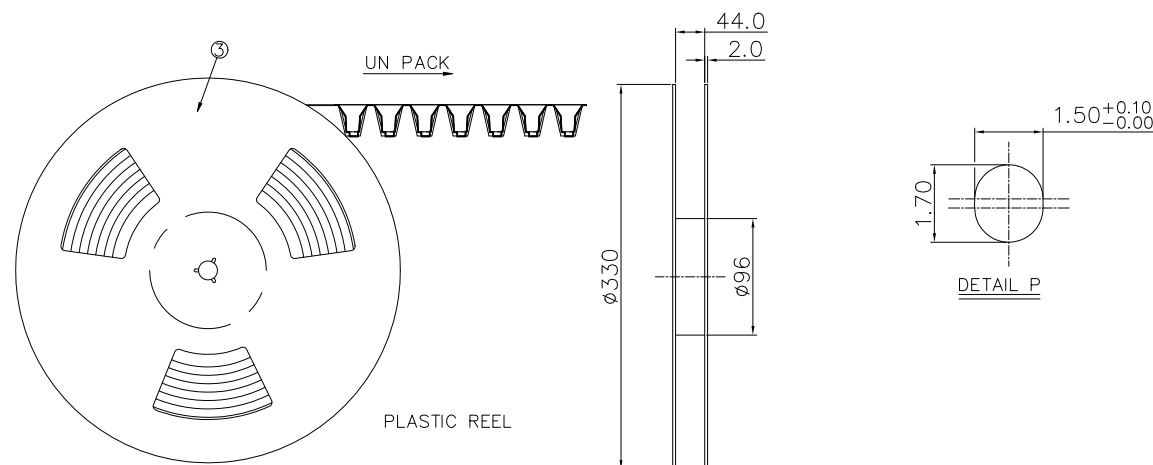
NOTES:

- 1.10 PITCHES CUMULATIVES TOLERANCE ON TAPE IS +/-0.20mm;
- 2.COVER TAPE PEELING STRENGTH :0.13Kgf MAX. AT 300mm/MINUTE;



3.PACKAGING CAPACITY:

P/N	PCS/REEL	REEL/BOX	PCS/BOX
DK00127-D2E05-1H	120	3	360



③	REEL	POLYSTYRENE
②	COVER TAPE	POLYSTER
①	CARRIER TAPE	POLYSTYRENE
ITEM	DESCRIPTION	MATERIAL

UNITS: mm	GENERAL TOLERANCE		APPROVED: Mike Wu	PART NO.: DK00127-D2E05-1H
DATE: 01/19'21	X. ±0.50	X.* ±3*	CHECKED: Wes Wu	TITLE:CUSTOMER DRAWING FOR 0.5P 24PIN DOCKING PLUG
SCALE: 1:1	.X ±0.30	.X* ±2*	DRAWING: Zhao Xia	DRAWING NO.: 820-0000-0848
SHEET: 3/3	MATERIAL: N/A	Q'TY N/A	 Highstar Drapho ELECTRONICS TECHNOLOGY CO., LTD	
REV. C	FINISH: N/A			