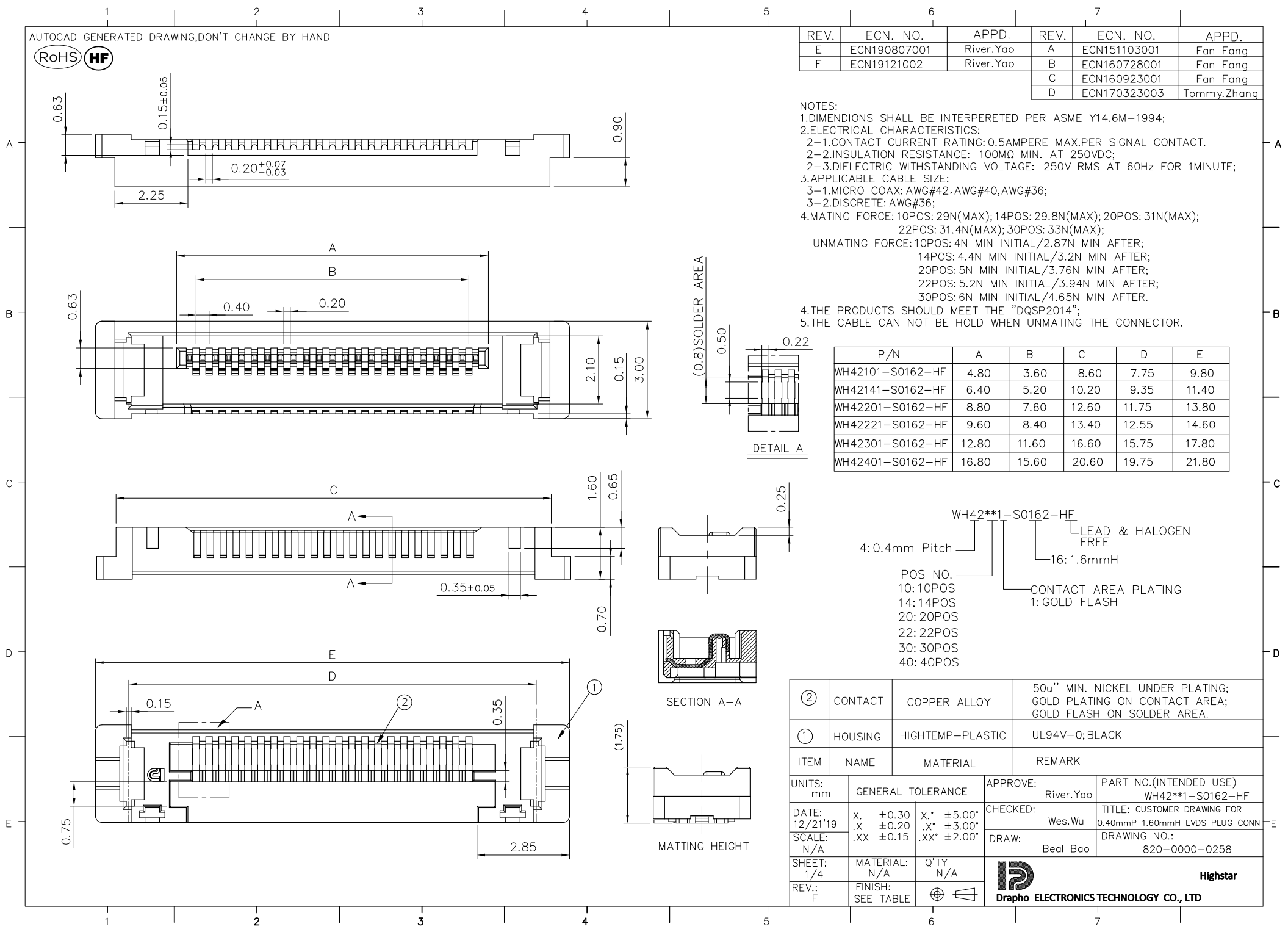




REV.	ECN. NO.	APPD.	REV.	ECN. NO.	APPD.
E	ECN190807001	River.Yao	A	ECN151103001	Fan Fang
F	ECN19121002	River.Yao	B	ECN160728001	Fan Fang
			C	ECN160923001	Fan Fang
			D	ECN170323003	Tommy.Zhang

NOTES:

- DIMENSIONS SHALL BE INTERPERETED PER ASME Y14.6M-1994;
- ELECTRICAL CHARACTERISTICS:
  - CONTACT CURRENT RATING: 0.5AMPERE MAX.PER SIGNAL CONTACT.
  - INSULATION RESISTANCE: 100MΩ MIN. AT 250VDC;
  - DIELECTRIC WITHSTANDING VOLTAGE: 250V RMS AT 60Hz FOR 1MINUTE;
- APPLICABLE CABLE SIZE:
  - MICRO COAX: AWG#42.AWG#40,AWG#36;
  - DISCRETE: AWG#36;
- MATING FORCE: 10POS: 29N(MAX); 14POS: 29.8N(MAX); 20POS: 31N(MAX); 22POS: 31.4N(MAX); 30POS: 33N(MAX); UNMATING FORCE: 10POS: 4N MIN INITIAL/2.87N MIN AFTER; 14POS: 4.4N MIN INITIAL/3.2N MIN AFTER; 20POS: 5N MIN INITIAL/3.76N MIN AFTER; 22POS: 5.2N MIN INITIAL/3.94N MIN AFTER; 30POS: 6N MIN INITIAL/4.65N MIN AFTER.
- THE PRODUCTS SHOULD MEET THE "DQSP2014";
- THE CABLE CAN NOT BE HOLD WHEN UNMATING THE CONNECTOR.



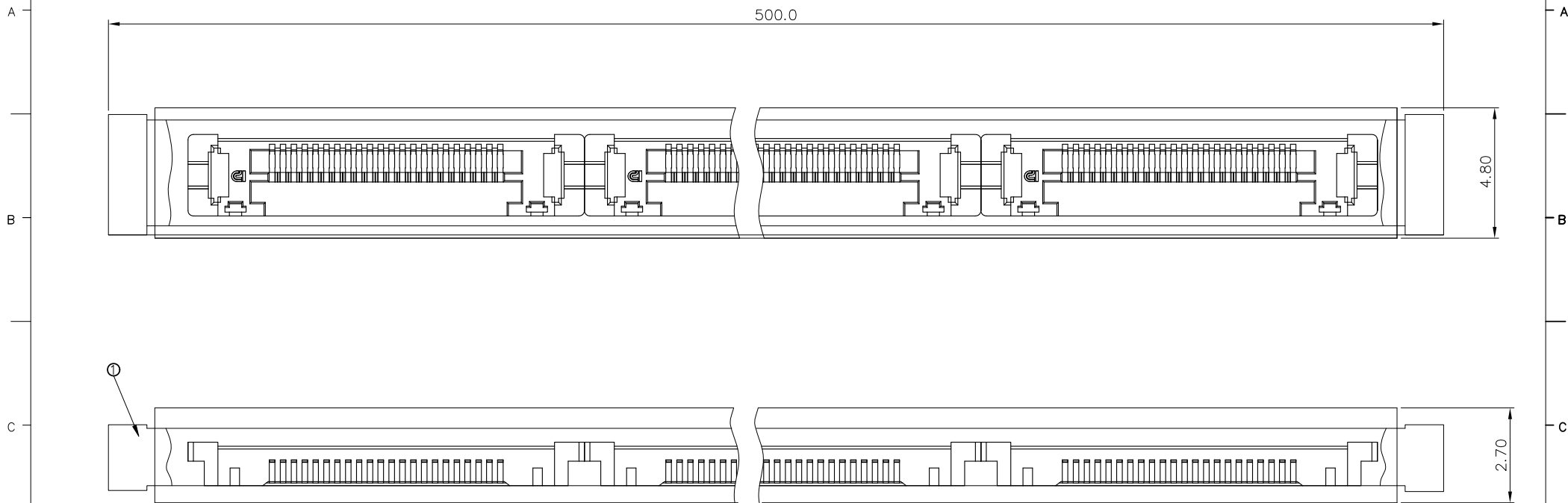
P/N	A	B	C	D	E
WH42101-S0162-HF	4.80	3.60	8.60	7.75	9.80
WH42141-S0162-HF	6.40	5.20	10.20	9.35	11.40
WH42201-S0162-HF	8.80	7.60	12.60	11.75	13.80
WH42221-S0162-HF	9.60	8.40	13.40	12.55	14.60
WH42301-S0162-HF	12.80	11.60	16.60	15.75	17.80
WH42401-S0162-HF	16.80	15.60	20.60	19.75	21.80

WH42\*\*1-S0162-HF  
 LEAD & HALOGEN FREE  
 4: 0.4mm Pitch  
 POS NO.  
 10: 10POS  
 14: 14POS  
 20: 20POS  
 22: 22POS  
 30: 30POS  
 40: 40POS  
 CONTACT AREA PLATING  
 1: GOLD FLASH  
 16: 1.6mmH

②	CONTACT	COPPER ALLOY	50u" MIN. NICKEL UNDER PLATING; GOLD PLATING ON CONTACT AREA; GOLD FLASH ON SOLDER AREA.
①	HOUSING	HIGHTEMP-PLASTIC	UL94V-0;BLACK
ITEM	NAME	MATERIAL	REMARK
UNITS:	mm	GENERAL TOLERANCE	APPROVE: River.Yao
DATE:	12/21'19	X. ±0.30 .X ±0.20 .XX ±0.15	X.* ±5.00* .X* ±3.00* .XX* ±2.00*
SCALE:	N/A		CHECKED: Wes.Wu
SHEET:	1/4	MATERIAL: N/A	Q'TY: N/A
REV.:	F	FINISH: SEE TABLE	
			PART NO.(INTENDED USE) WH42**1-S0162-HF
			TITLE: CUSTOMER DRAWING FOR 0.40mmP 1.60mmH LVDS PLUG CONN
			DRAWING NO.: 820-0000-0258
			Beal Bao
			Drawing Technology Co., Ltd
			Highstar



REV.	ECN. NO.	APPD.
------	----------	-------



P/N	PCS/TUBE	TUBE/BOX	PCS/BOX
WH42101-S0162-HF	49	300	14700
WH42201-S0162-HF	35	300	10500
WH42301-S0162-HF	27	300	8100

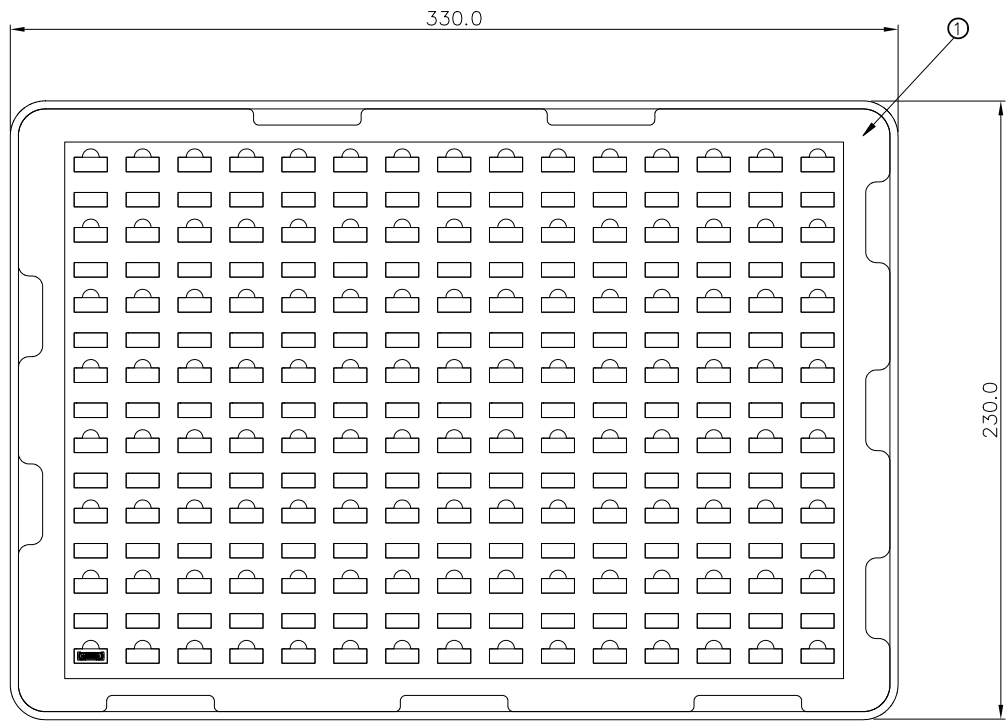
UNITS: mm	GENERAL TOLERANCE	
DATE: 12/21'19	X. ±0.30 .X ±0.20 .XX ±0.15	X.* ±5.00* .X.* ±3.00* .XX.* ±2.00*
SCALE: N/A	MATERIAL: N/A	Q'TY N/A
SHEET: 2/4	FINISH: SEE TABLE	
REV.: F		

①	TUBE	PET
ITEM	DESC.	MATERIAL
	River.Yao	PART NO.(INTENDED USE) WH42**1-S0162-HF
	Wes.Wu	TITLE: CUSTOMER DRAWING FOR 0.40mmP 1.60mmH LVDS PLUG CONN
	Beal Bao	DRAWING NO.: 820-0000-0258

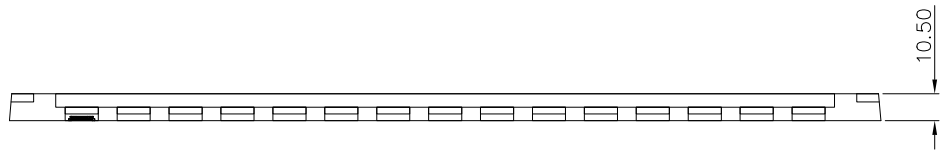
**D** Highstar  
Drapho ELECTRONICS TECHNOLOGY CO., LTD



REV.	ECN. NO.	APPD.



P/N	PCS/TRAY	TRAY/BOX	PCS/BOX
WH42221-S0162-HF	180	50	9000

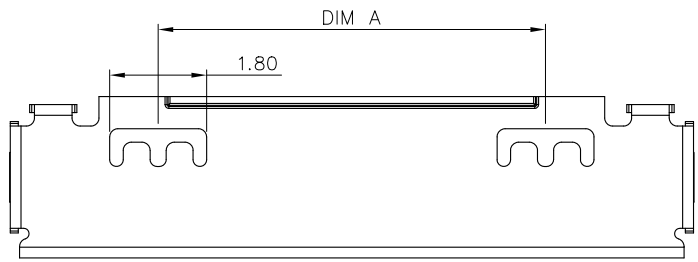


①	TRAY	PET
ITEM	DESC.	MATERIAL

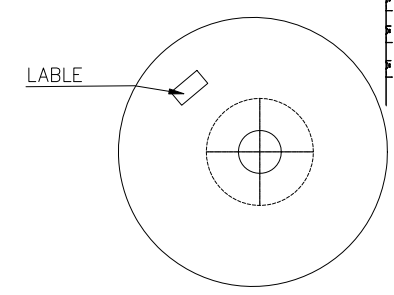
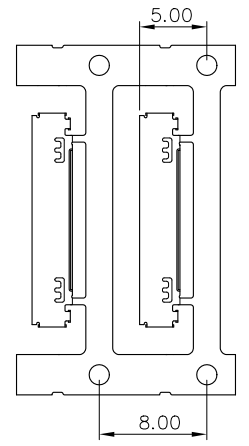
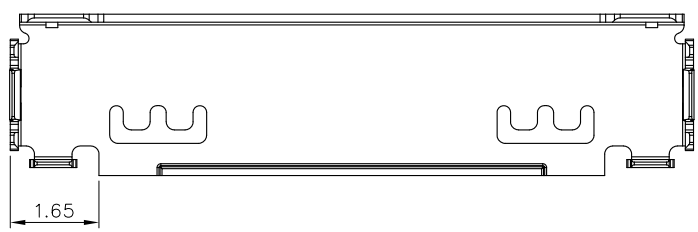
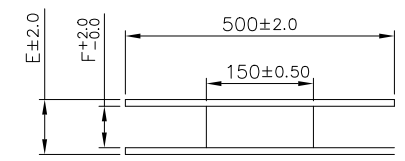
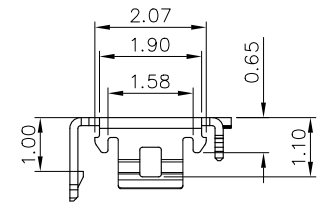
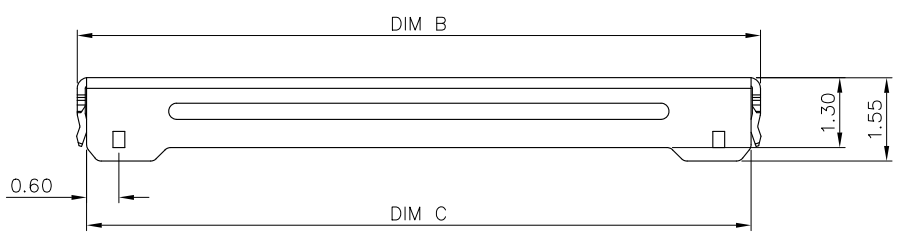
UNITS: mm	GENERAL TOLERANCE		APPROVE: River.Yao	PART NO.(INTENDED USE) WH42**1-S0162-HF
DATE: 12/21'19	X. ±0.30 .X ±0.20 .XX ±0.15	X.* ±5.00* .X.* ±3.00* .XX.* ±2.00*	CHECKED: Wes.Wu	TITLE: CUSTOMER DRAWING FOR 0.40mmP 1.60mmH LVDS PLUG CONN
SCALE: N/A			DRAW: Beal Bao	DRAWING NO.: 820-0000-0258
SHEET: 3/4	MATERIAL: N/A	Q'TY N/A	 Drapho ELECTRONICS TECHNOLOGY CO., LTD <span style="float: right;">Highstar</span>	
REV.: F	FINISH: SEE TABLE			



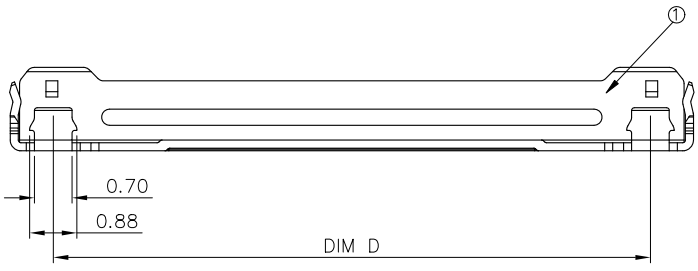
REV.	ECN. NO.	APPD.
------	----------	-------



P/N	DIM A	DIM B	DIM C	DIM D	DIM E	DIM F
070-0010-067		7.90	7.55	6.30	50.00	40.00
070-0014-067		9.50	9.15	7.90	50.00	40.00
070-0020-067	6.40	11.90	11.55	10.30	50.00	40.00
070-0022-067	7.20	12.70	12.35	11.10	50.00	40.00
070-0030-067	10.40	15.90	15.55	14.30	50.00	40.00
070-0040-067	14.40	19.90	19.55	18.30	50.00	40.00



P/N	PCS/REEL	PCS/BOX
070-0010-067	5000	10000
070-0014-067	5000	10000
070-0020-067	5000	10000
070-0022-067	5000	10000
070-0030-067	5000	10000
070-0040-067	5000	10000



070-00\*\*-067  
 POS NO.  
 10: FOR 10PIN  
 14: FOR 14PIN  
 20: FOR 20PIN  
 22: FOR 22PIN  
 30: FOR 30PIN  
 40: FOR 40PIN

①	SHELL	COPPER ALLOY	NICKEL UNDER PLATING; TIN PLATING OVER ALL		070-00**-067
ITEM	NAME	MATERIAL	REMARK	P/N	
UNITS:	mm	GENERAL TOLERANCE		APPROVE:	PART NO.(INTENDED USE)
DATE:	12/21'19	X. ±0.30 .X ±0.20	X* ±5.00* .X* ±3.00*	River.Yao	WH42**1-S0162-HF
SCALE:	N/A	.XX ±0.15	.XX* ±2.00*	Wes.Wu	TITLE: CUSTOMER DRAWING FOR 0.40mmP 1.60mmH LVDS PLUG CONN
SHEET:	4/4	MATERIAL: N/A	Q'TY N/A	Beal Bao	DRAWING NO.: 820-0000-0258
REV.:	F	FINISH: SEE TABLE	 <b>D</b> Drapho ELECTRONICS TECHNOLOGY CO., LTD		
			Highstar		