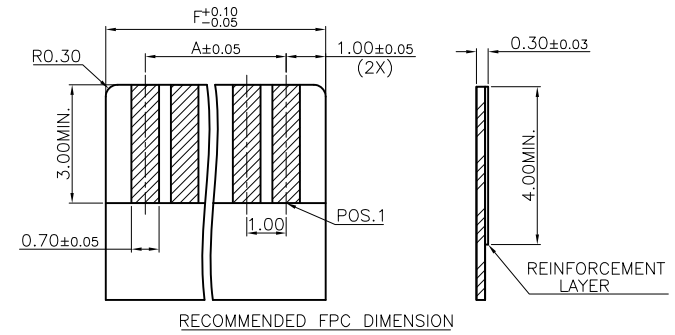
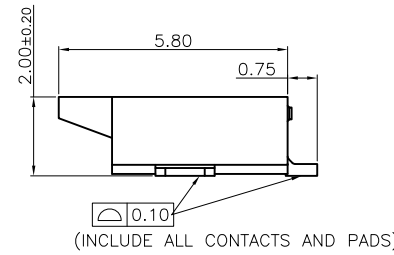
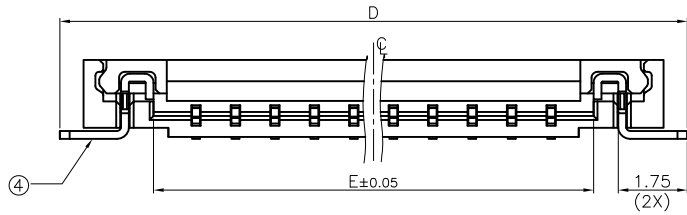
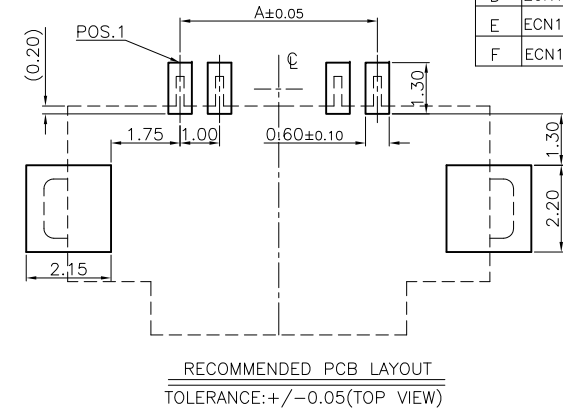
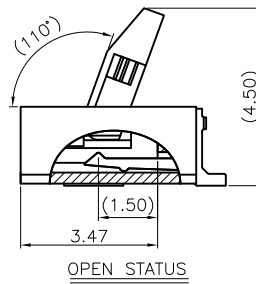
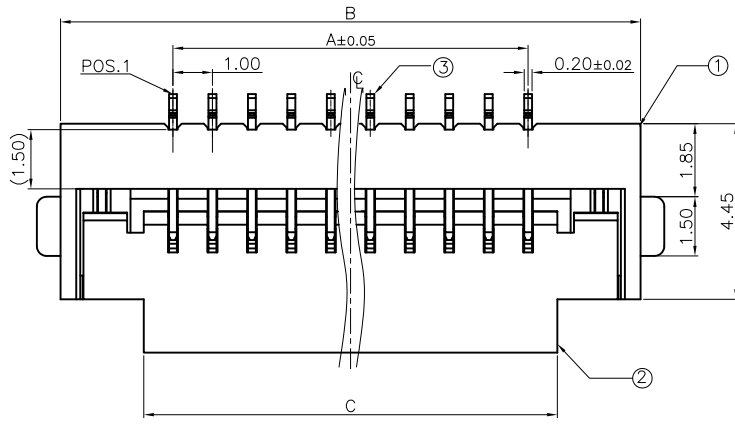




REV.	ECN. NO.	APPD.
A	ECN130313013	Fan.Fang
B	ECN130723009	Fan.Fang
C	ECN131029001	Fan.Fang
D	ECN150402006	Fan.Fang
E	ECN150801001	Fan.Fang
F	ECN160816009	Fan.Fang



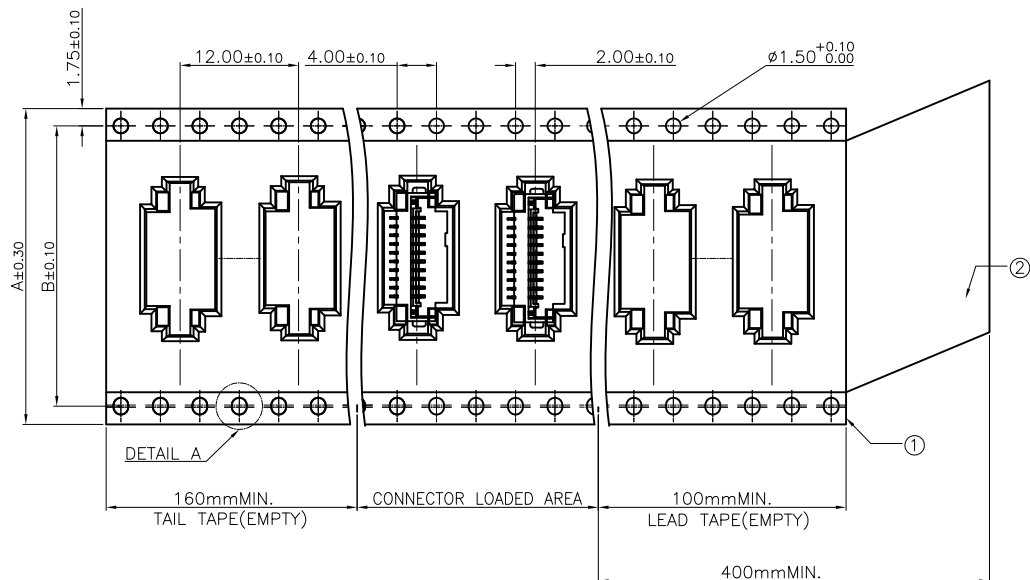
NO. OF CONTACT	A	B	C	D	E	F
4	3.00	8.70	4.48	9.90	5.15	5.00
6	5.00	10.70	6.48	11.90	7.15	7.00
10	9.00	14.70	10.48	15.90	11.15	11.00
22	21.00	26.70	22.48	27.90	23.15	23.00
26	25.00	30.70	26.48	31.90	27.15	27.00
30	29.00	34.70	30.48	35.90	31.15	31.00

- NOTES:  
 1.DIMENSIONS SHOULD BE INTERPRETED PER ASME Y14.5-1994.  
 2.ELECTRICAL CHARACTERISTICS:  
 2-1.CONTACT CURRENT RATING:0.5A MAX. PER PIN;  
 2-2.INSULATION RESISTANCE: 100 MEGAOHMS MIN. AT 500 VDC;  
 2-3.DIELECTRIC WITHSTANDING VOLTAGE:500 VAC RMS AT 60HZ FOR 1 MINUTE;  
 2-4.CONTACT RESISTANCE:  
 50 MINIOHMS MAX. INITIAL.  
 100 MINIOHMS MAX. AFTER PHYSICAL AND ENVIRONMENTAL TESTS.  
 3.MECHANICAL CHARACTERISTICS  
 3-1.DURABILITY:30CYCLES;  
 4.ENVIRONMENTAL CHARACTERISTICS:  
 4-1.OPERATING TEMPERATURE: -40 °C TO +85°C.  
 5.HARMFUL MATERIAL CONTROL SHOULD MEET DOCUMENT "DSQC0042".

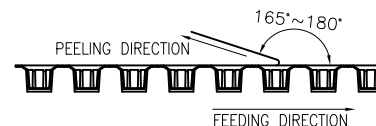
PART NO.  
**FC1AF\*\*\*-1201H**  
 FPC CONN. PITCH:1=1.0mm  
 POS.NO.:  
 04=04POS.  
 06=06POS.  
 10=10POS.  
 22=22POS.  
 26=26POS.  
 30=30POS.  
 HALOGEN/LEAD FREE TAPE & REEL  
 PROFILE HEIGHT: 20=2.0mm  
 CONTACT AREA PLATING:  
 0=MATTE TIN PLATING  
 1=GOLD FLASH

ITEM	DESCRIPTION	Q'TY	MATERIAL	TREATMENT	ATTACHMENT
④	PAD	2	STAINLESS STEEL	75±25u", NICKEL UNDER PLATING; 100±50u" MATTE TIN PLATING OVERALL.	
③	CONTACT	**	PHOSPHOR BRONZE C5210	75±25u" NICKEL UNDER PLATING; 100±50u" MATTE TIN PLATING OVERALL. 75+/-25u" NICKEL UNDER PLATING; 1u" MIN GOLD FLASH(DOT PLATING) ON CONTACT AREA AND SOLDER AREA	FOR: FC1AF**0-1201H FOR: FC1AF**1-1201H
②	ACTUATOR	1	THERMOPLASTIC	COLOR:BLACK	UL, 94V-0
①	HOUSING	1	THERMOPLASTIC	COLOR:IVORY	UL, 94V-0

UNITS: mm	GENERAL TOLERANCE		APPROVED:	PART NO.:(INTENDED USE)
DATE: 08/16/16	X. ±0.20 .X ±0.10	X.* ±3* .X* ±2*	Fan Fang	FC1AF***-1201H
SCALE: N/A	.XX ±0.05		CHECKED: Daniel Yuan	TITLE: CUSTOMER DRAWING
SHEET: 1/3	MATERIAL: SEE TABLE	Q'TY N/A	DRAWING: Rum He	DRAWING NO.: 820-0000-074
REV. F	FINISH: N/A		<b>Highstar</b> Drapho ELECTRONICS TECHNOLOGY CO., LTD	

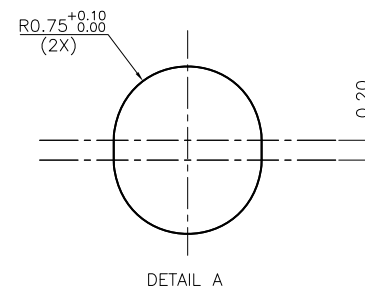
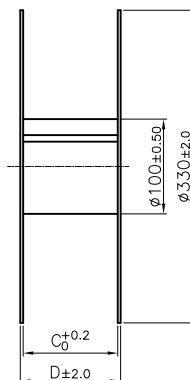
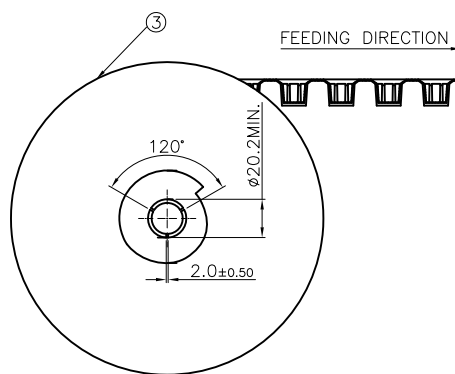


NOTES:  
 1.10 PITCHES CUMULATIVES TOLERANCE ON TAPE IS +/-0.20mm;  
 2.COVER TAPE PEELING STRENGTH :0.13Kgf MAX. AT 300mm/MINUTE;



3.PACKAGING CAPACITY:

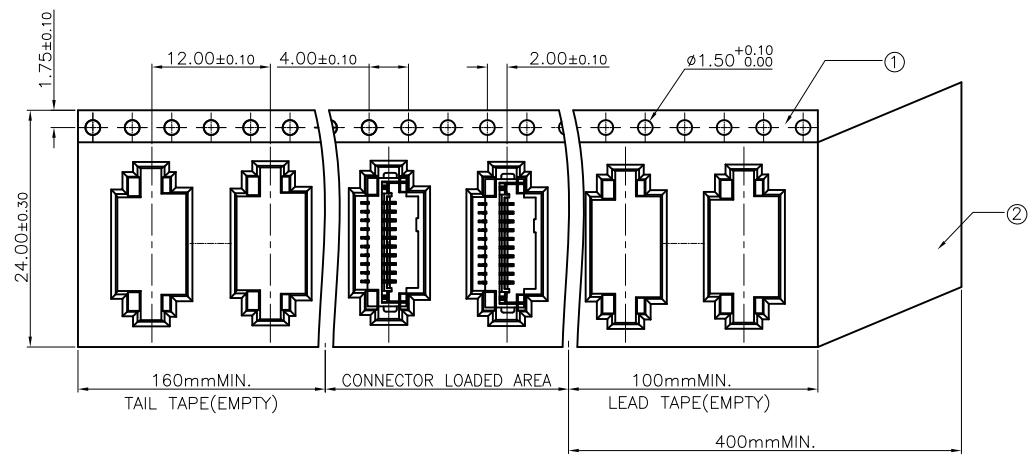
P/N	PCS/REEL	REEL/BOX	PCS/BOX	DIM.A	DIM.B	DIM.C	DIM.D
FC1AF26*-1201H	1500	6	9000	44.0	40.4	44.4	50.4
FC1AF30*-1201H	1500	5	7500	56.0	52.4	56.4	62.4
FC1AF22*-1201H	1500	6	9000	44.0	40.4	44.4	50.4



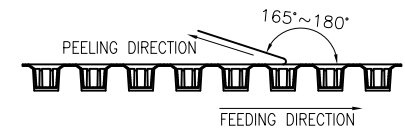
③	REEL	POLYSTYRENE	
②	COVER TAPE	POLYSTER	
①	CARRIER TAPE	POLYSTYRENE	
ITEM	DESCRIPTION	MATERIAL	
UNITS: mm	GENERAL TOLERANCE	APPROVED: Fan Fang	
DATE: 08/16/16	X. ±0.20 .X ±0.10 .XX ±0.05	X.* ±3* .X* ±2*	PART NO.: (INTENDED USE) FC1AF***-1201H
SCALE: N/A		CHECKED: Daniel Yuan	TITLE: CUSTOMER DRAWING
SHEET: 2/3	MATERIAL: SEE TABLE	DRAWING: Rum He	DRAWING NO.: 820-0000-074
REV. F	FINISH: N/A	Q'TY N/A	Highstar
			<b>Drapho ELECTRONICS TECHNOLOGY CO., LTD</b>

REV.	ECN. NO.	APPD.

**RoHS**  
**HF**

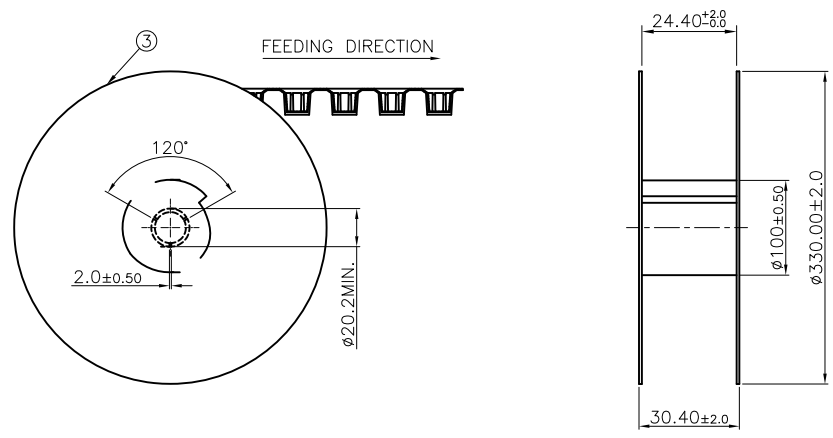


NOTES:  
1.10 PITCHES CUMULATIVES TOLERANCE ON TAPE IS +/-0.20mm;  
2.COVER TAPE PEELING STRENGTH :0.13Kgf MAX. AT 300mm/MINUTE;



3.PACKAGING CAPACITY:

P/N	PCS/REEL	REEL/BOX	PCS/BOX
FC1AF04*-1201H	1500	6	9000
FC1AF06*-1201H	1500	6	9000
FC1AF10*-1201H	1500	6	9000



③	REEL	POLYSTYRENE		
②	COVER TAPE	POLYSTER		
①	CARRIER TAPE	POLYSTYRENE		
ITEM	DESCRIPTION	MATERIAL		
UNITS: mm	GENERAL TOLERANCE	APPROVED: Fan Fang	PART NO.: (INTENDED USE) FC1AF***-1201H	
DATE: 08/16/16	X. ±0.20 .X ±0.10 .XX ±0.05	X.* ±3* .X* ±2*	CHECKED: Daniel Yuan	TITLE: CUSTOMER DRAWING
SCALE: N/A			DRAWING: Rum He	DRAWING NO.: 820-0000-074
SHEET: 3/3	MATERIAL: SEE TABLE	Q'TY N/A	 Highstar Drapho ELECTRONICS TECHNOLOGY CO., LTD	
REV. F	FINISH: N/A			